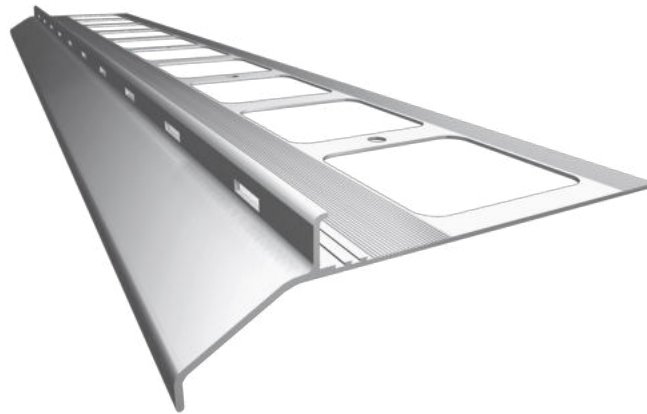


Brief instructions for constructing a balcony/terrace using the

RENOPLAST K20 SIMPLE

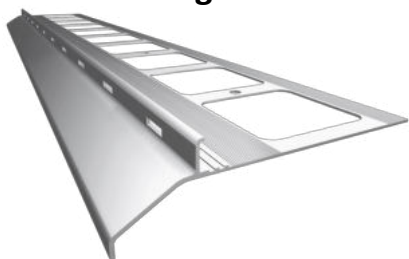
system with "stone carpet" type resin floor



Layout of components of the RENOPLAST K20 SIMPLE system



Straight profile K20
length 200 cm



1

Connector LK20



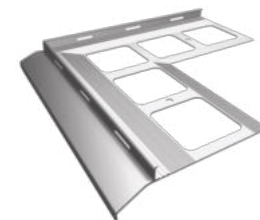
2

OPK20 End stops
(left/right)

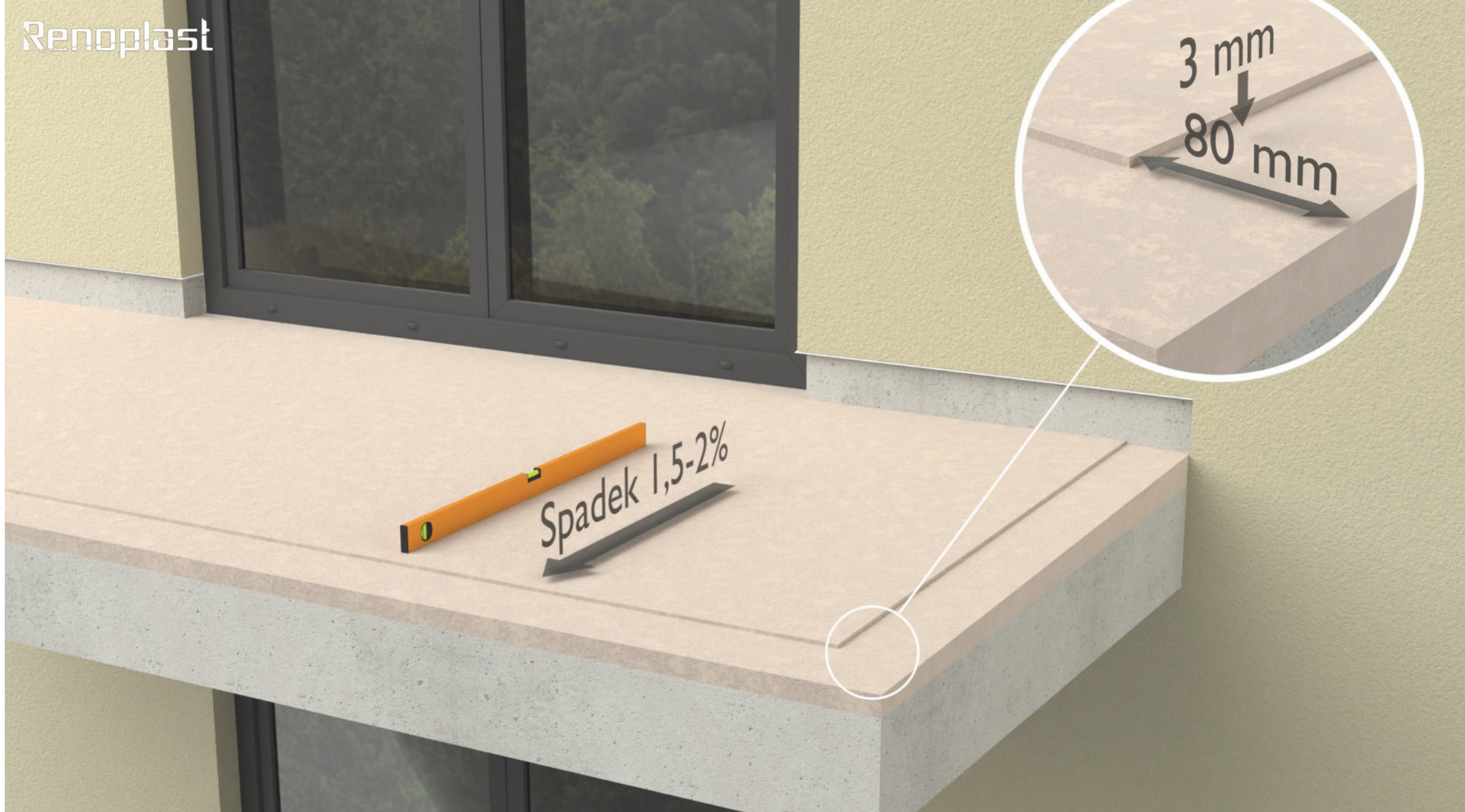


3

NZ K20/90
Outside corner 90°

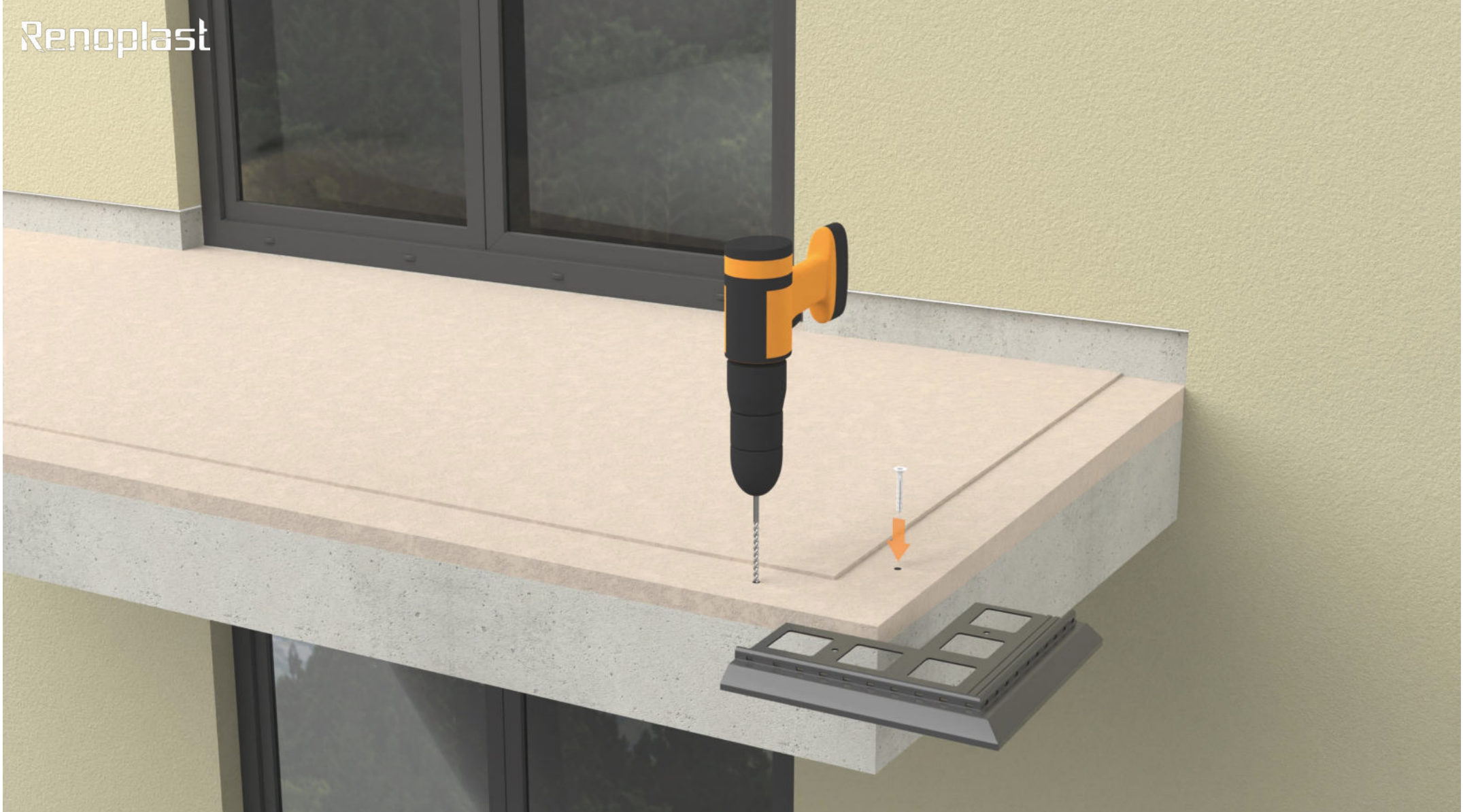


4



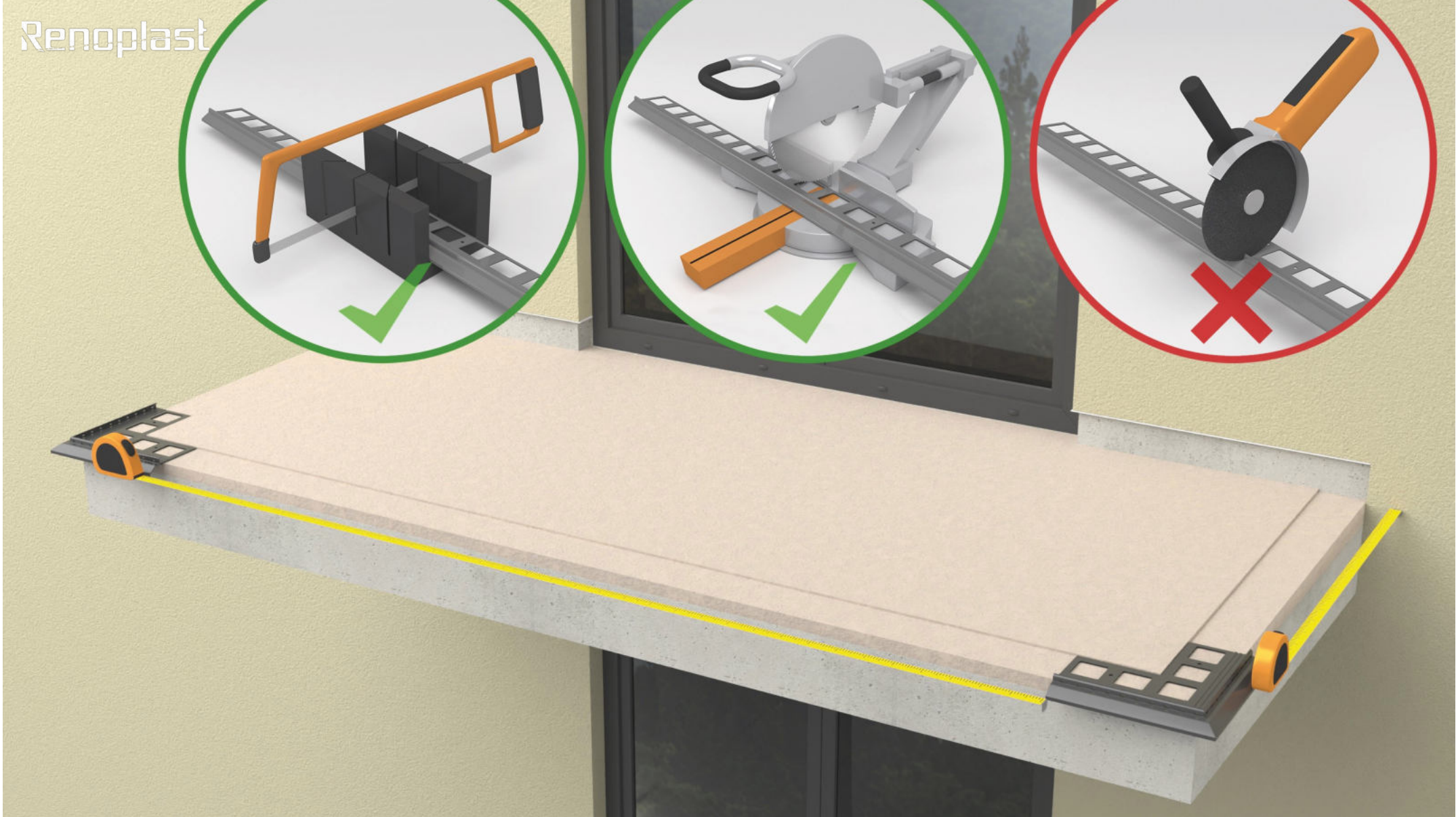
Balcony/terrace floor bases

The base should be even and load-bearing with a slope of 1.5 - 2% towards the front edge. It is recommended that along the edge of the underlay on the width of the mounted profile 80 mm, lower the underlay to a depth of about 3 mm, so that the mounted profile is flush with the base plane.



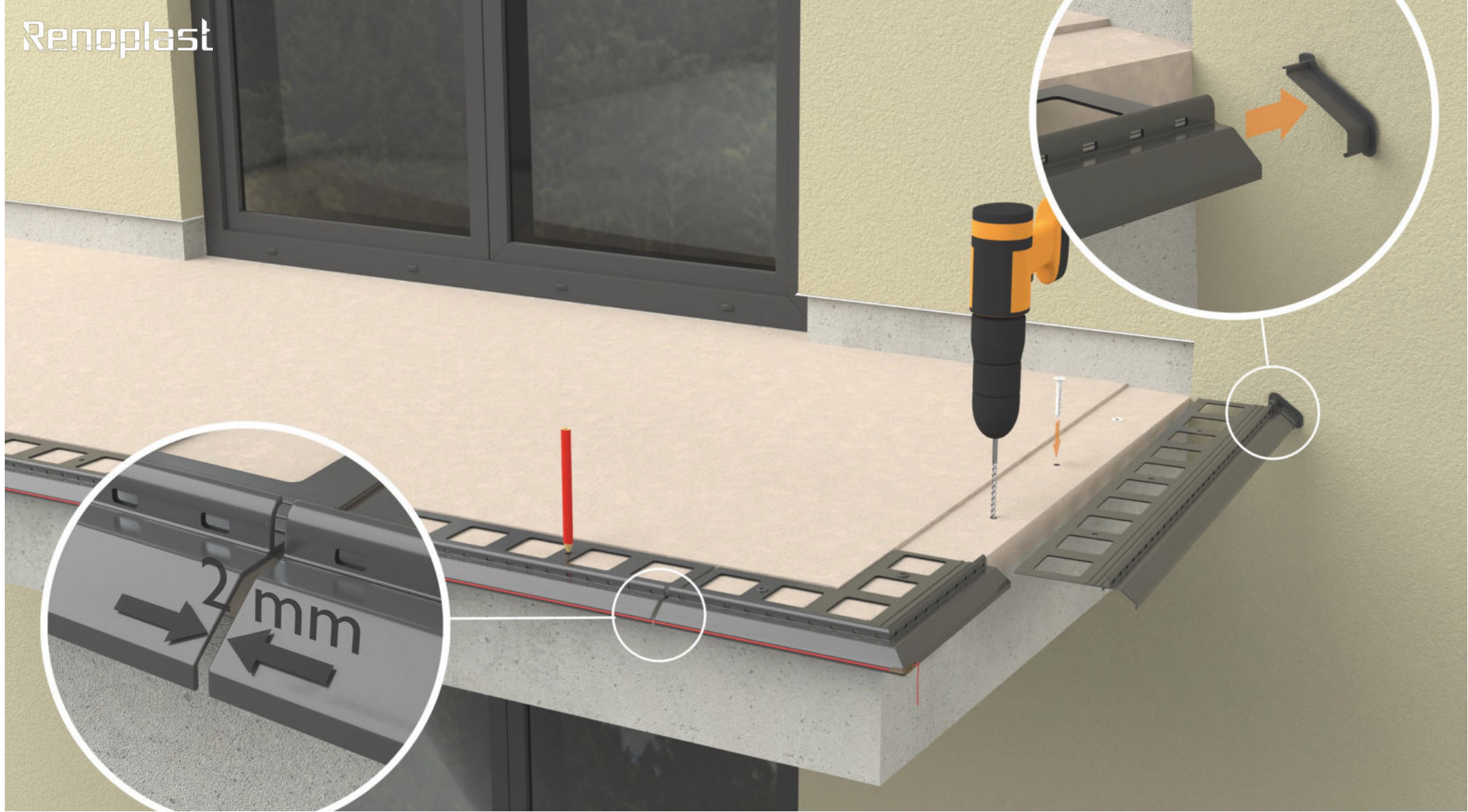
Pre-assembly of NZ K20/90 corners

We start the work with the initial fixing of the corners, using expansion bolts (expansion bolts in a set with a corner).



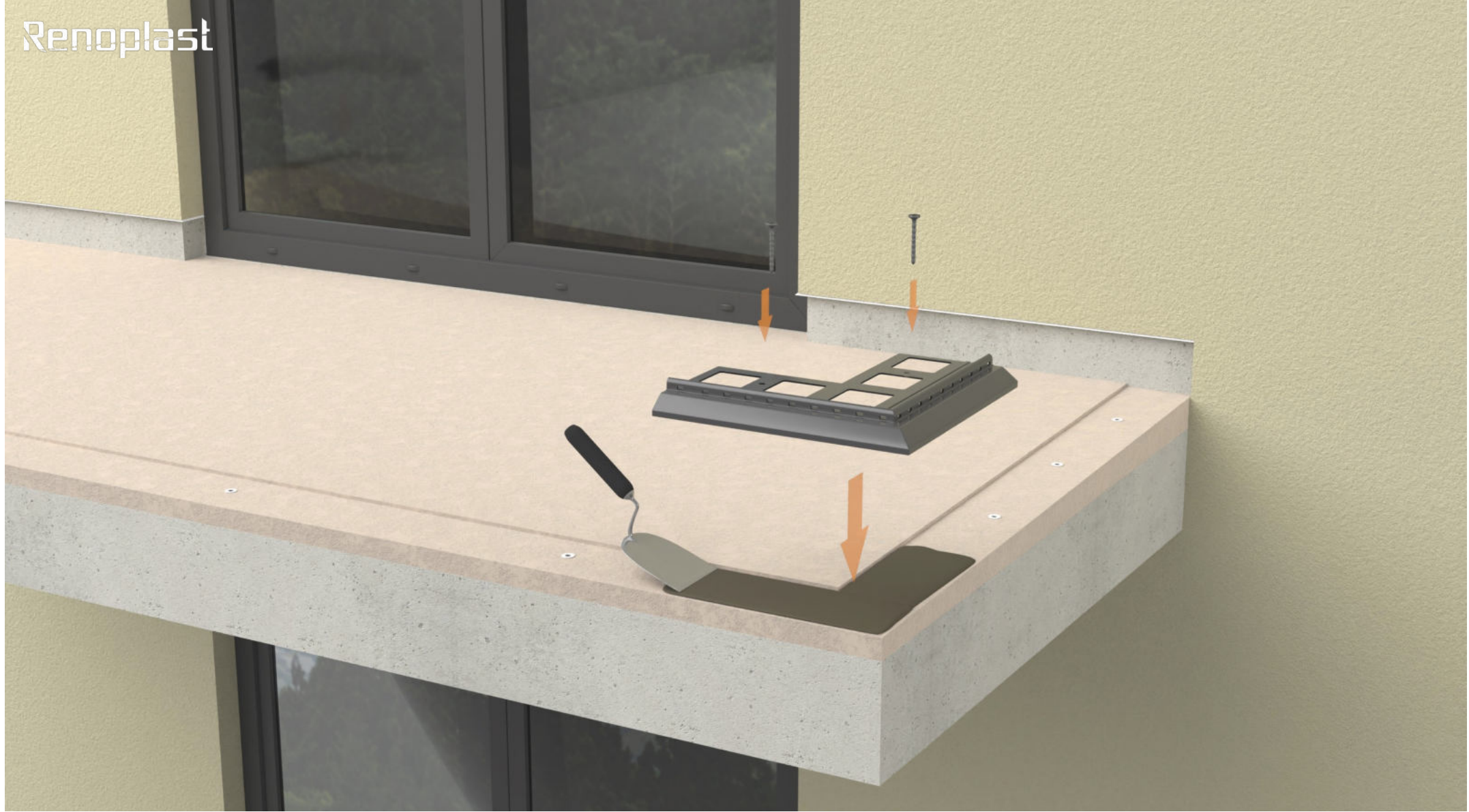
Preparation of straight profiles K20

The next step is to measure the straight sections to prepare (cut) the straight profiles. The straight sections must be prepared in such a way as to leave expansion gaps of approx. 2 mm at the joints and a space of approx. 2 mm at the wall for the **OPK20** end stop. The profiles should be cut with a hand-held metal saw or a mechanical saw with a suitable blade for cutting aluminium. Cutting with other tools may cause damage the paintwork, which is unacceptable.



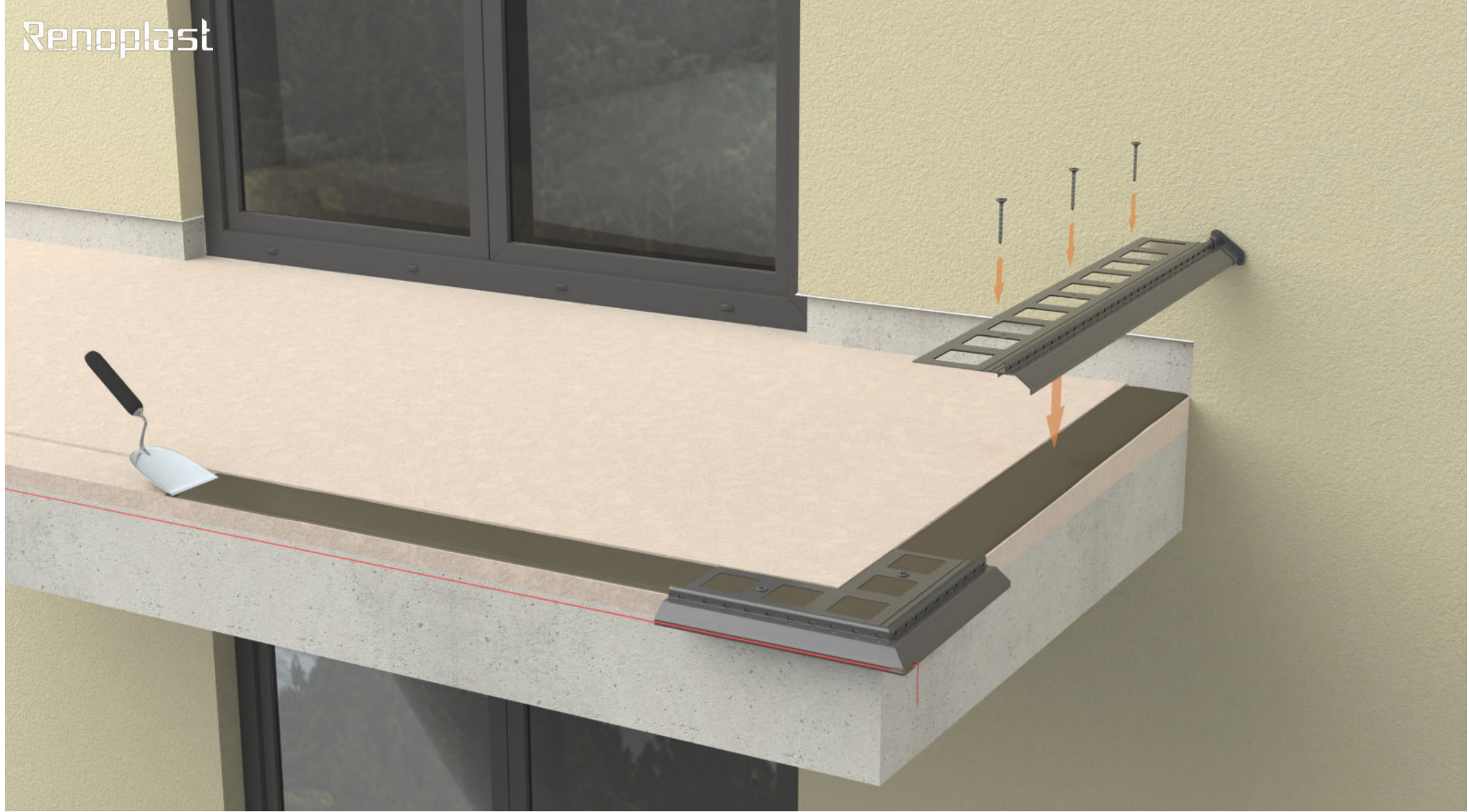
Making mounting holes in the underlay

Between the corners **NZ K20/90** we place straight **K20** profiles, mark the places for mounting holes on the base. We remove the profiles, then drill the mounting holes.



Installation of corners NZ K20/90

The corners are placed on the resin mass or sealing mass, and then mechanically fastened with the help of pre-installed expansion bolts. Tighten the screws after the resin/sealing compound has set.



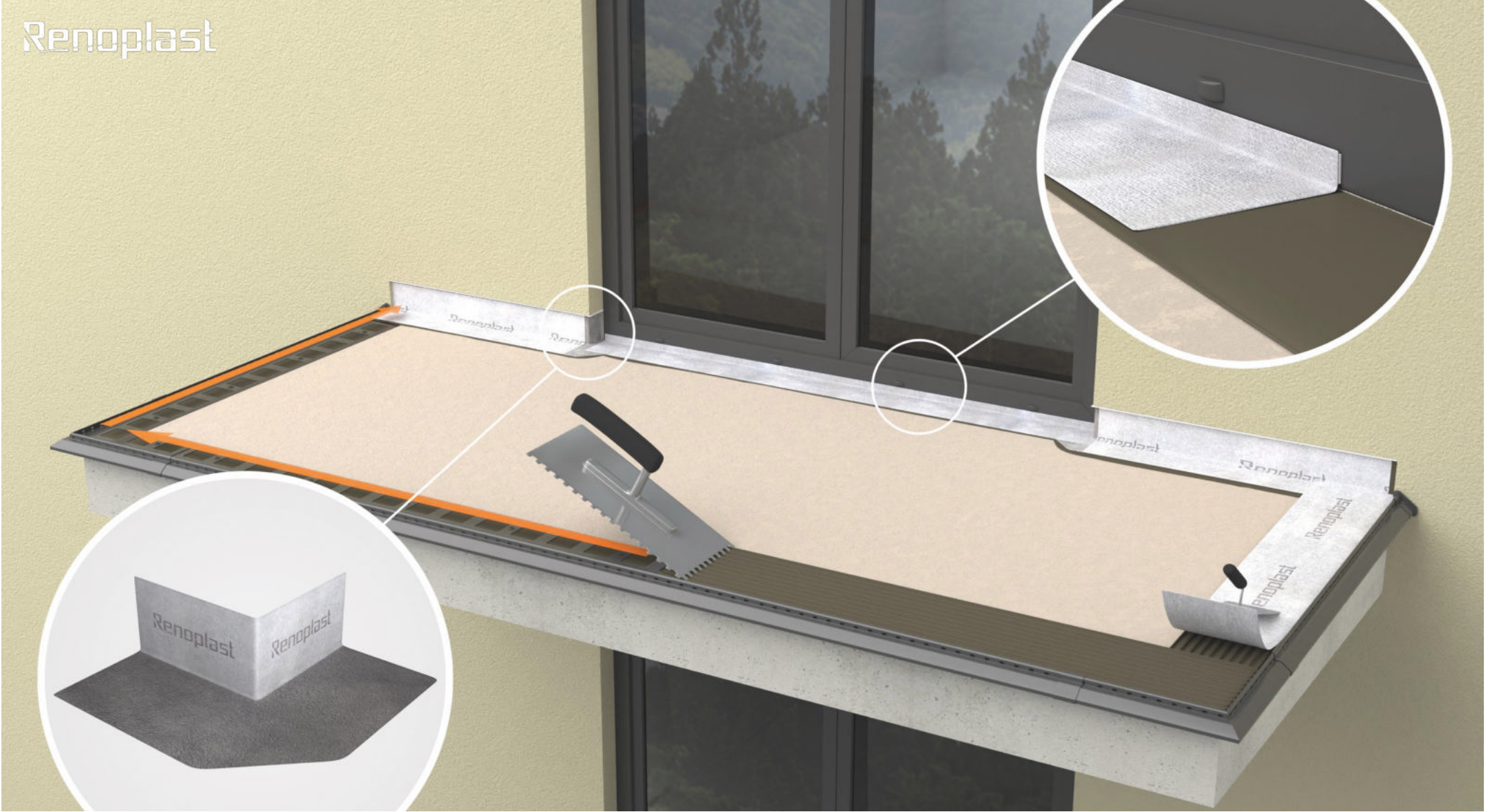
Installation of straight K20 profiles

Straight profiles are set in the same way as corners. Using a string stretched between the corners and spirit level, we take care of their even assembly.



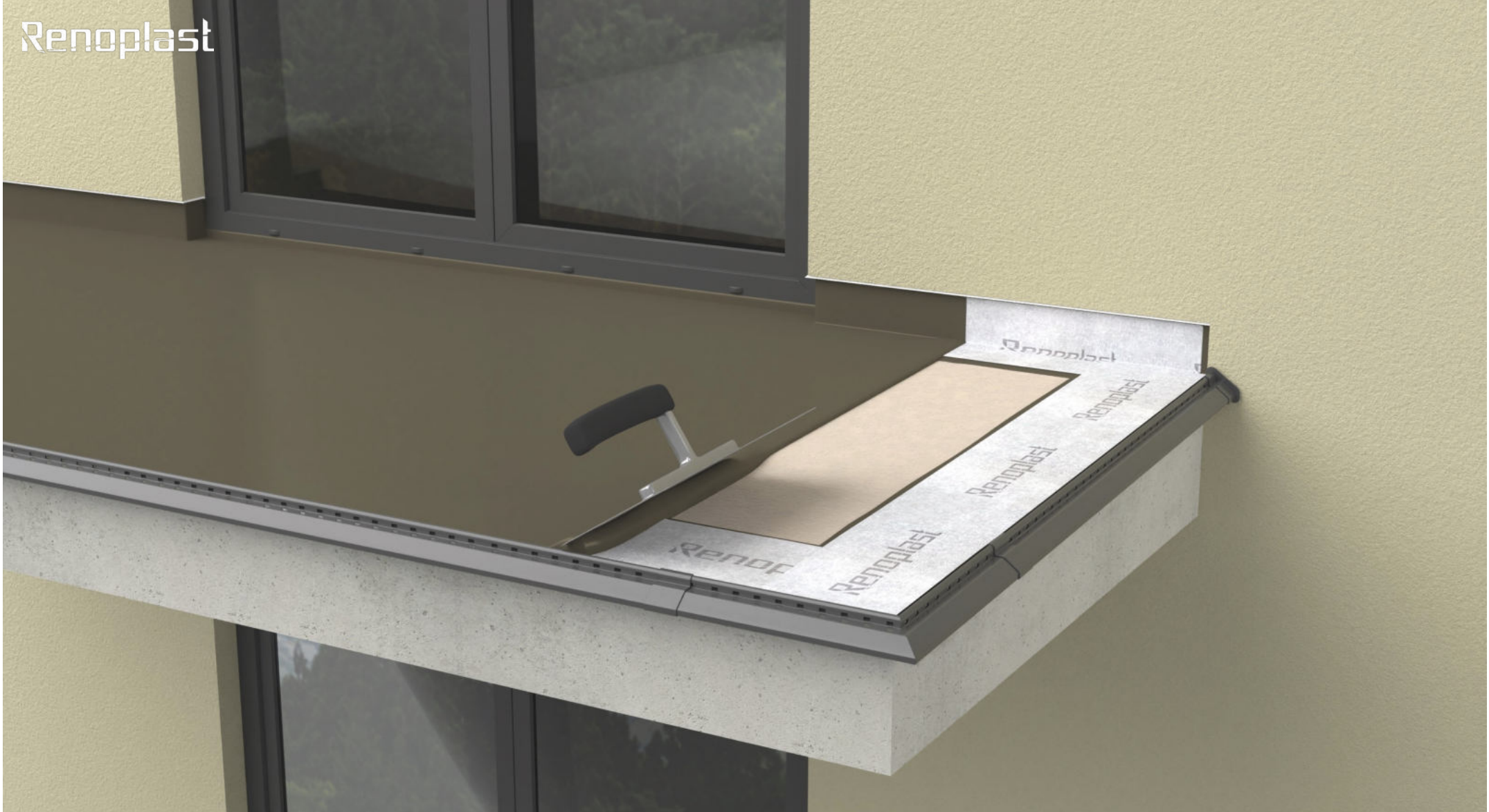
Sealing of profile joints, installation of LK20 connectors

The gaps at the profile connections are filled with a permanently elastic compound (e.g. polyurethane), and connectors are installed from the outside.



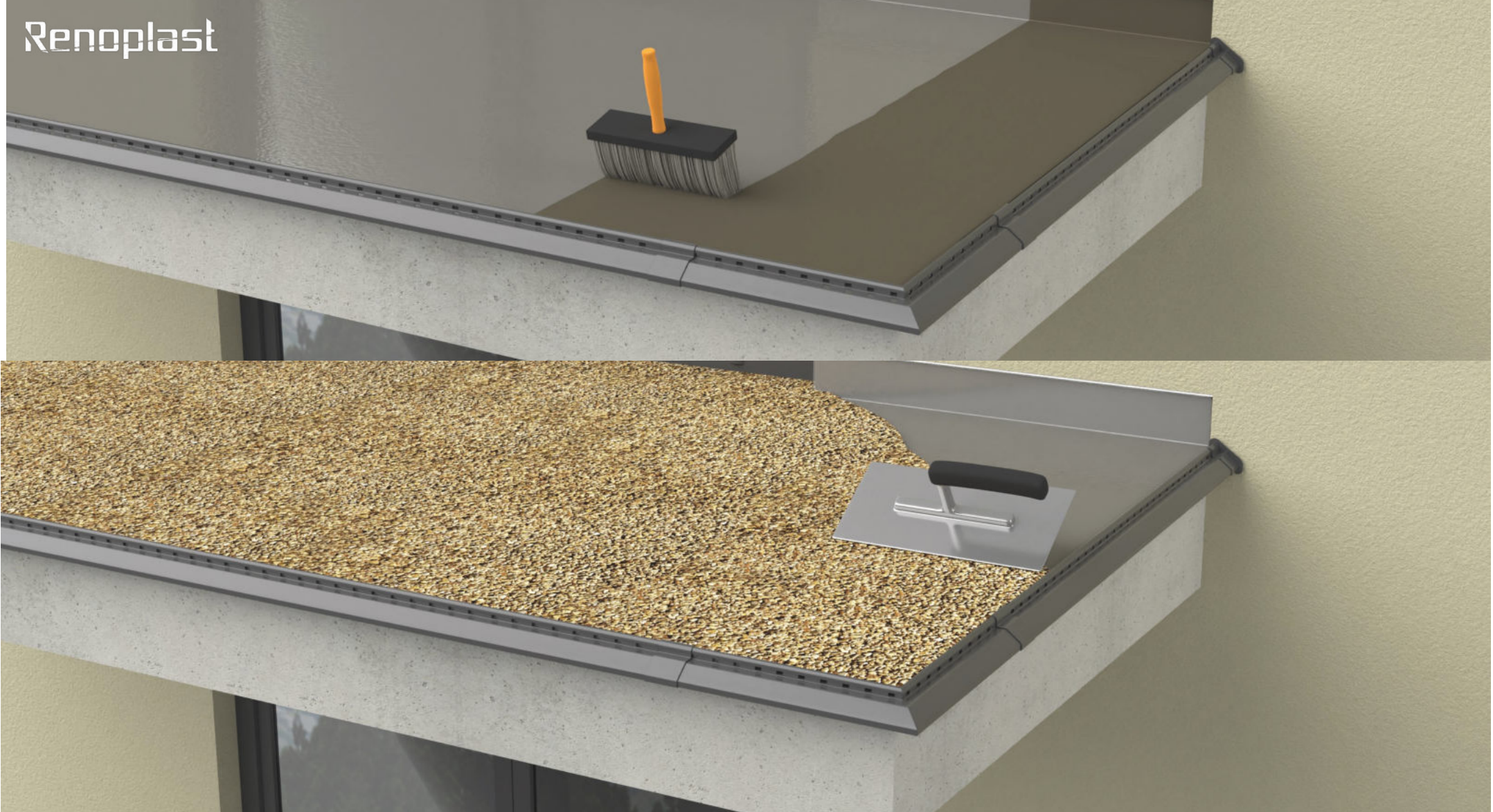
Connection of K20 profiles with the base

We connect the profiles with a cement base glued on the resin with a strip of non-woven fabric or mesh, or we embed the tape in the sealing mortar. We follow the manufacturer's instructions strictly.



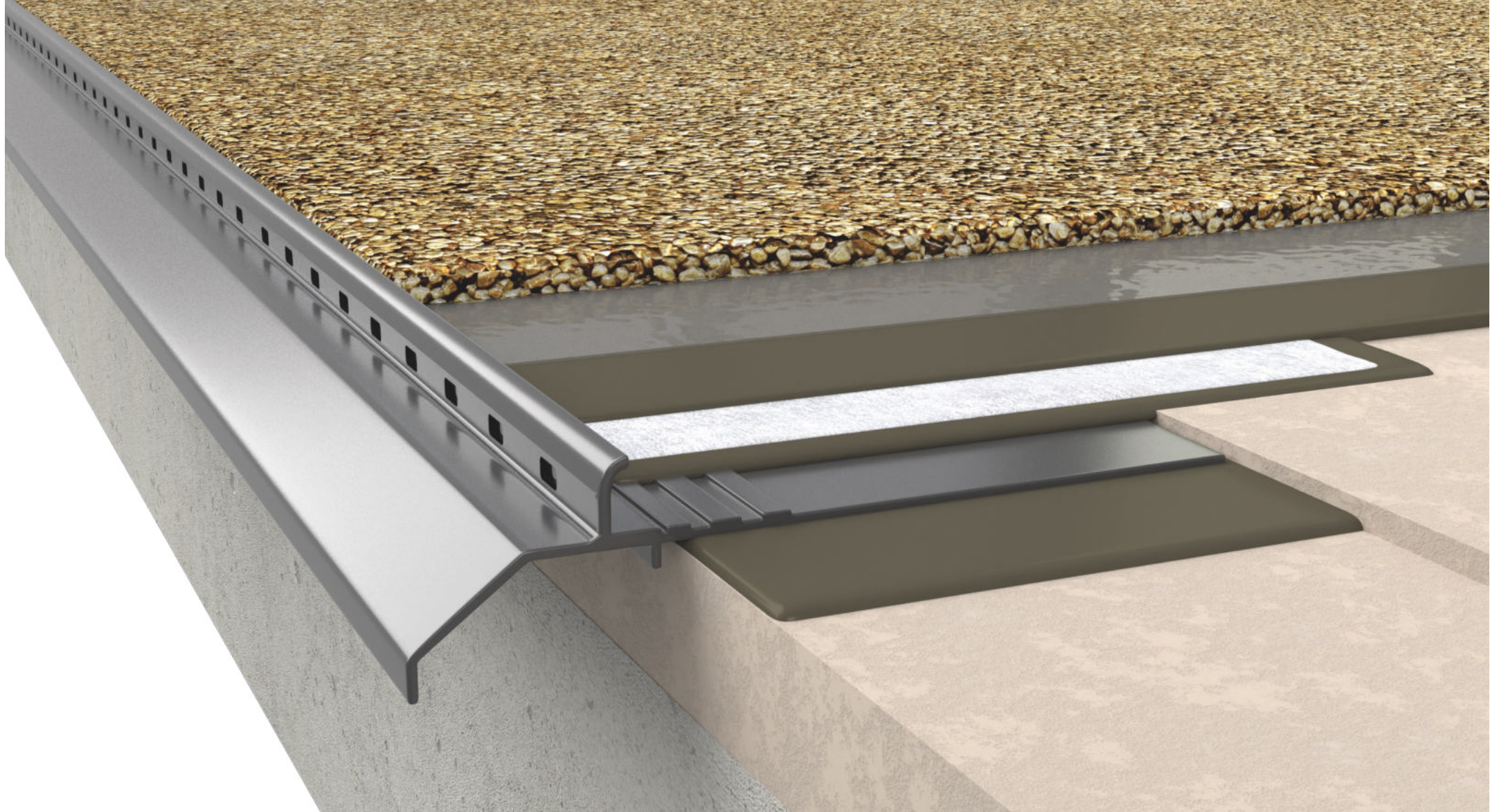
Application of the waterproofing layer

Apply the resinous waterproofing or sealing mortar to the entire surface of the subfloor with a roller or comb float according to the approved technology.



Laying the resin/aggregate mix pavement

Once the waterproofing has set, we lay the resin/aggregate mix. This is carried out in accordance with technology.



COMMENTS:

The front edge of the **K20** profile has a height of 10 mm, which corresponds to the thickness of the "stone carpet" resin floor systems. Drainage holes on the front edge are placed at the lowest point, thanks to which they are effective they drain water from the resin floor layers. This manual presents general recommendations, technology may vary depending on the material manufacturer's guidelines.