

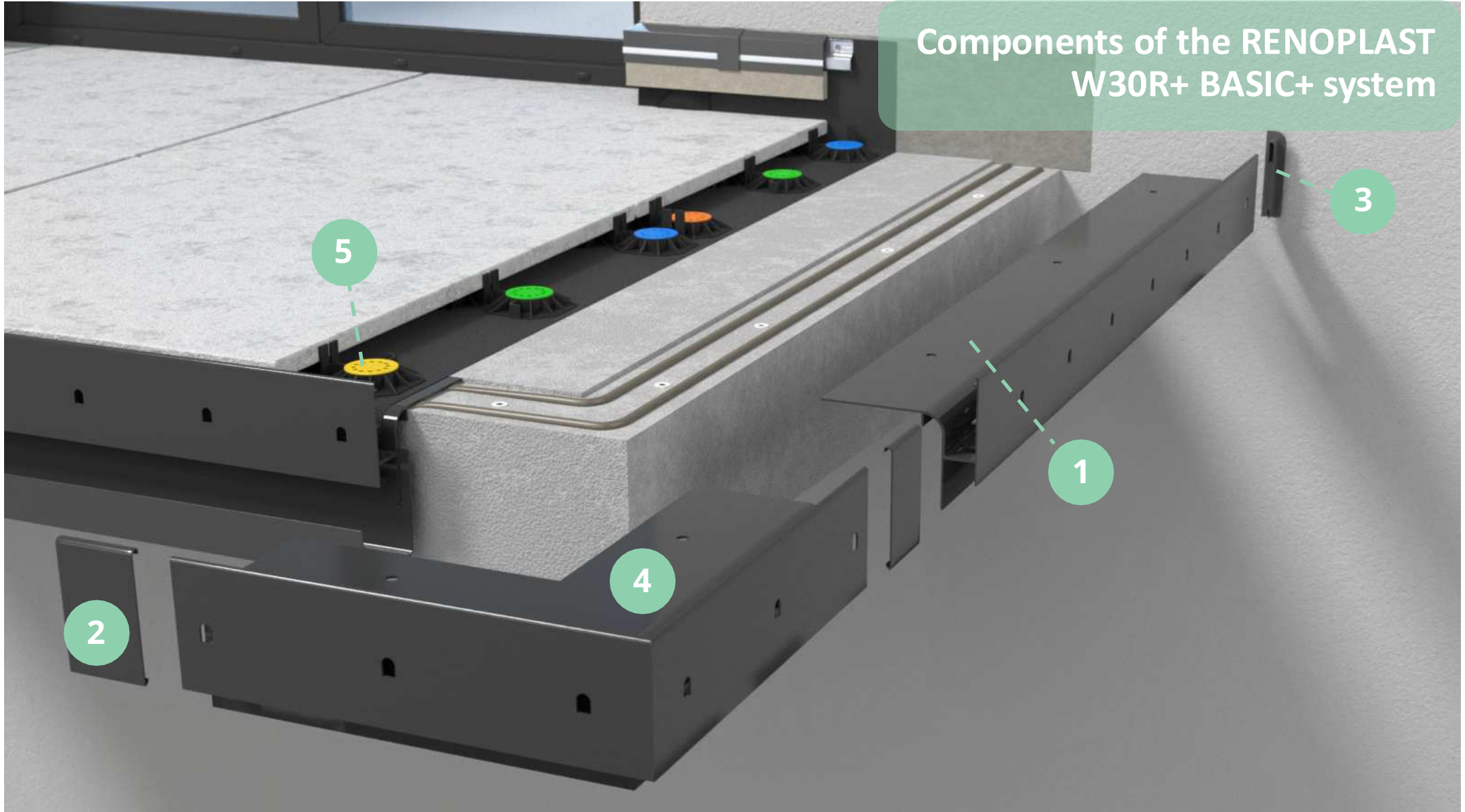
Quick Installation Guide for balcony/terrace finishing using the

RENOPLAST BASIC+ W30R+

with ceramic pavers laid on SMART support pads



Components of the RENOPLAST W30R+ BASIC+ system



W30R+ Profile L: 200 cm



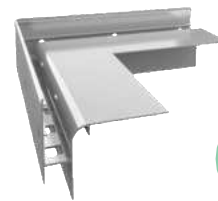
Connector LW30R+



End cap OPW30R+ (left/right)



Outside corner 90° NZ W30R+/90



SMART Support pad





Substrate for balcony/terrace flooring

The screed for tiled floor should be even and sound and have a 1.5 - 2 % slope towards the front edge. It is recommended that a peripheral drop/indentation in the screed, the width corresponding to the width of the installed profile (80 mm), is formed to the depth of 3 mm to ensure that the profile is installed flush and level with the screed surface.



Surface for baseboard waterproofing

The wall surface where the membrane will be installed must be smooth and sound. **A** 18 cm high strip should be prepared on the wall to take the waterproofing.



Initial NZ W30R+/90 corners installation

Start with securing the corner pieces using dowels/anchors (included in the set).



Cutting of W30R+ straight profiles

Next, measure straight sections to cut the **W30R+** profiles. When measuring and cutting straight profiles, make sure that 2 mm expansion gaps are left between profiles and at the profile/wall joints a gap suitable to allow for the end cap installation **OPW30R+**. Use a hand saw or circular saw with a suitable blade for cutting aluminium. Do not cut with other tools as it may damage the paint coating, which is not acceptable.



NZ W30R+/90 corners installation

Install corners using a mastic sealant (e.g. PU sealant) and fix them to the substrate using dowels.



W30R+ straight profiles installation

Installation procedure for the **W30R+** straight profiles is the same as for the corners. When installed, cover the joints with the clip-on connectors **LW30R+**. **LW30R+** Use builder's line stretched between the corners and a spirit level to ensure that they are aligned and flush. Pre-tighten the anchors, making sure that the sealant does not ooze out from under the profiles.



Installation of the EPDM membrane - preparation

Unroll the **EPDM Membrane** and lay out flat on the surface. Allow it to rest for 60 mins to make sure that transit creases and wrinkles are removed. Next, cut the membrane allowing for excess material to overlap the other sheets, extend onto the wall and on profiles.



Bonding of EPDM membrane to the substrate

Work around the perimeter. To attach a strip of **EPDM membrane**, apply the **KS137** bonding adhesive along the length of the baseboard area on the wall to the height of 20 cm and to the surface of the **W30R+** profiles and **NZ W30R+/90** corners. Both the substrate and the back of the membrane must be coated with the bonding adhesive. Allow it to dry for 5-15 mins before you make the seam. Use a hand roller to press along the joints for good contact.



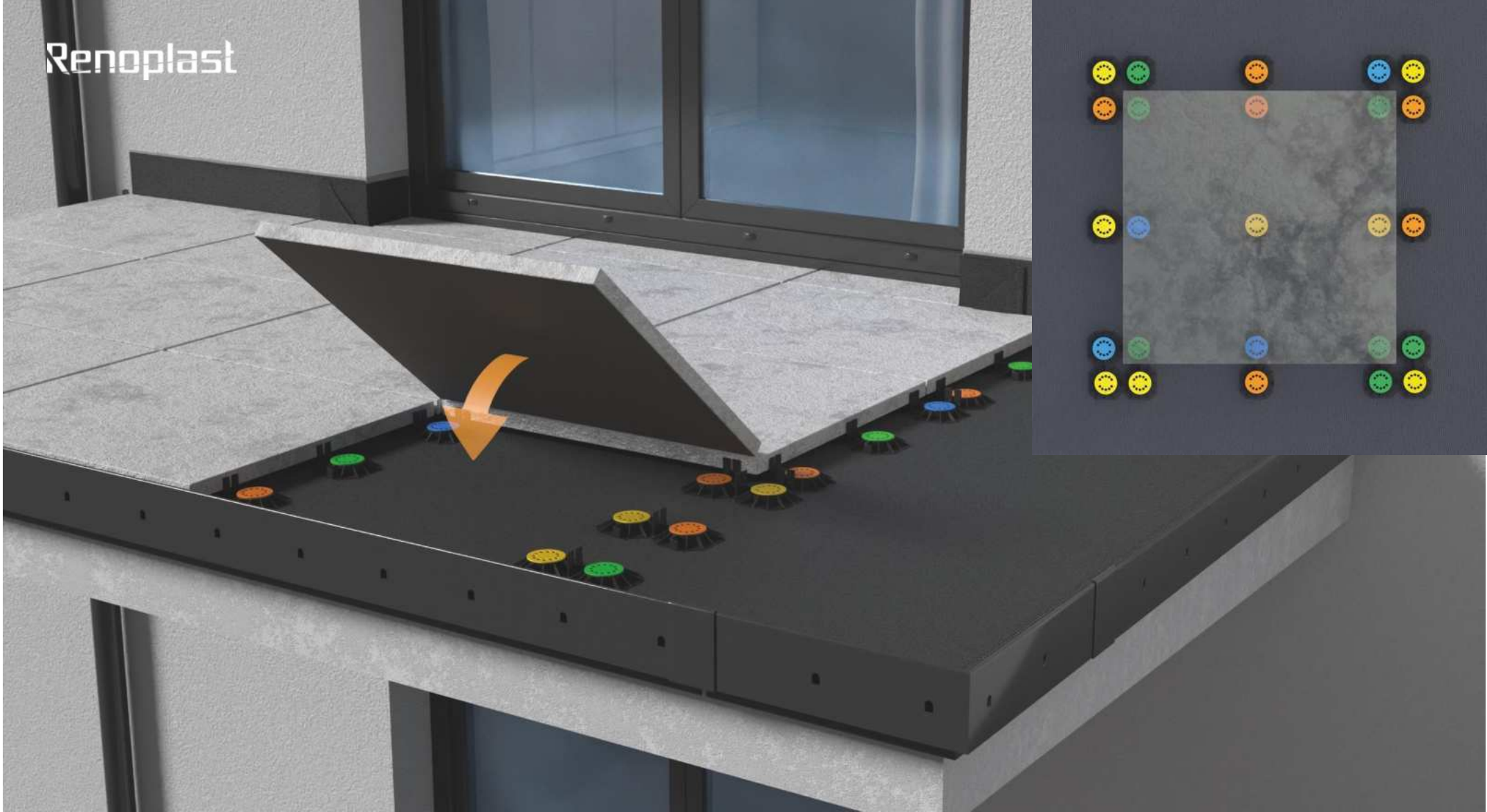
Sealing the EPDM membrane seams

Fold the **EPDM membrane** back approx. 2 cm along the edge and apply the **KS 96** elastic sealant, roll the sealing area to apply the pressure and squeeze some sealant out of the membrane edge to get a solid seal. Seal at folds, seams and the joints with the **W30R+** drip edge profile.



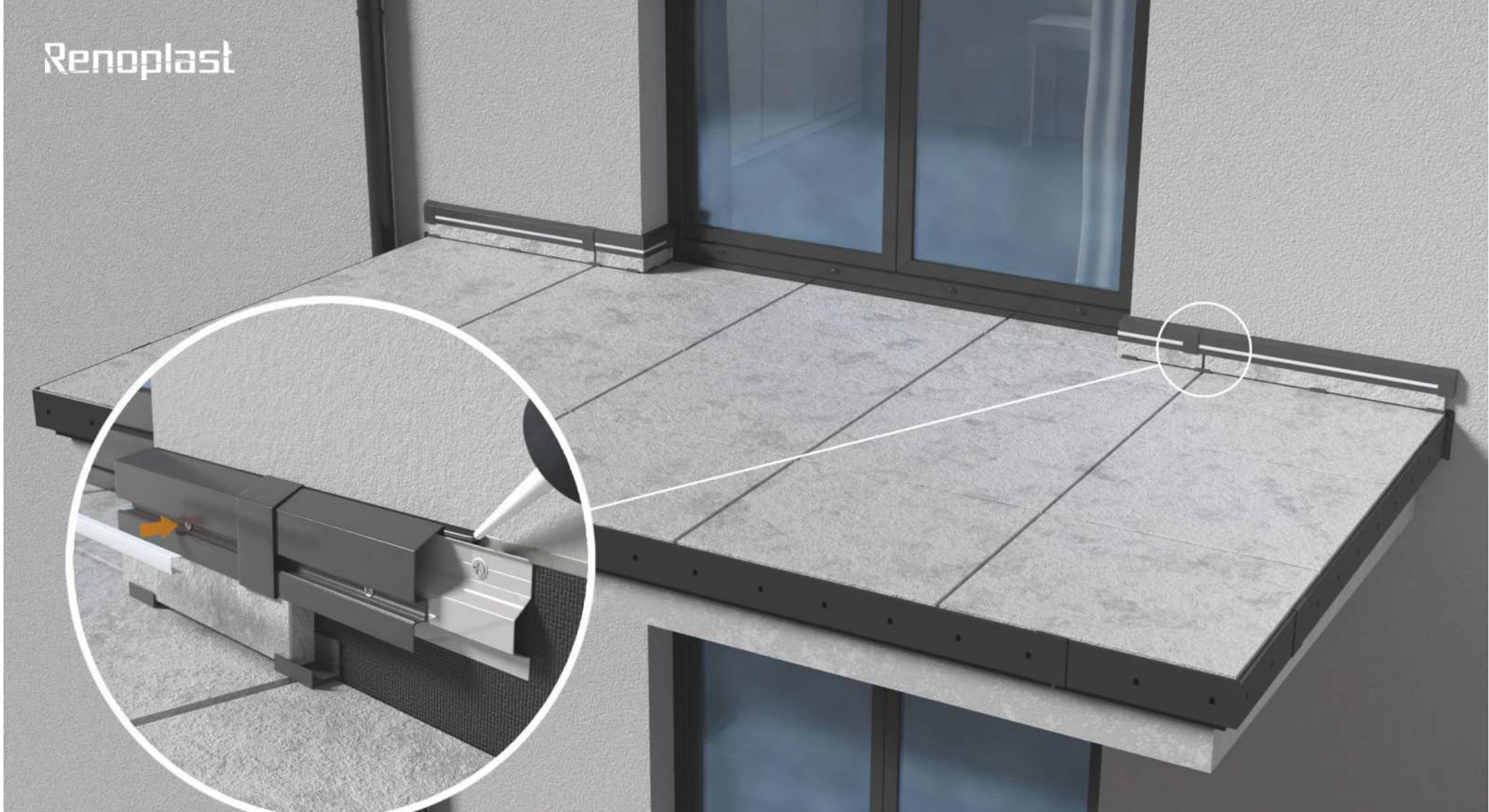
Sealing around balcony door threshold

Use the pre-fabricated **EPDM** outside corners to seal the corners of the balcony reveal. Bond with the **KS137** adhesive and seal with the **KS96** sealant. To seal the joint of the **EPDM membrane** with the doorstep install a **self-adhesive EPDM tape with butyl strip**.



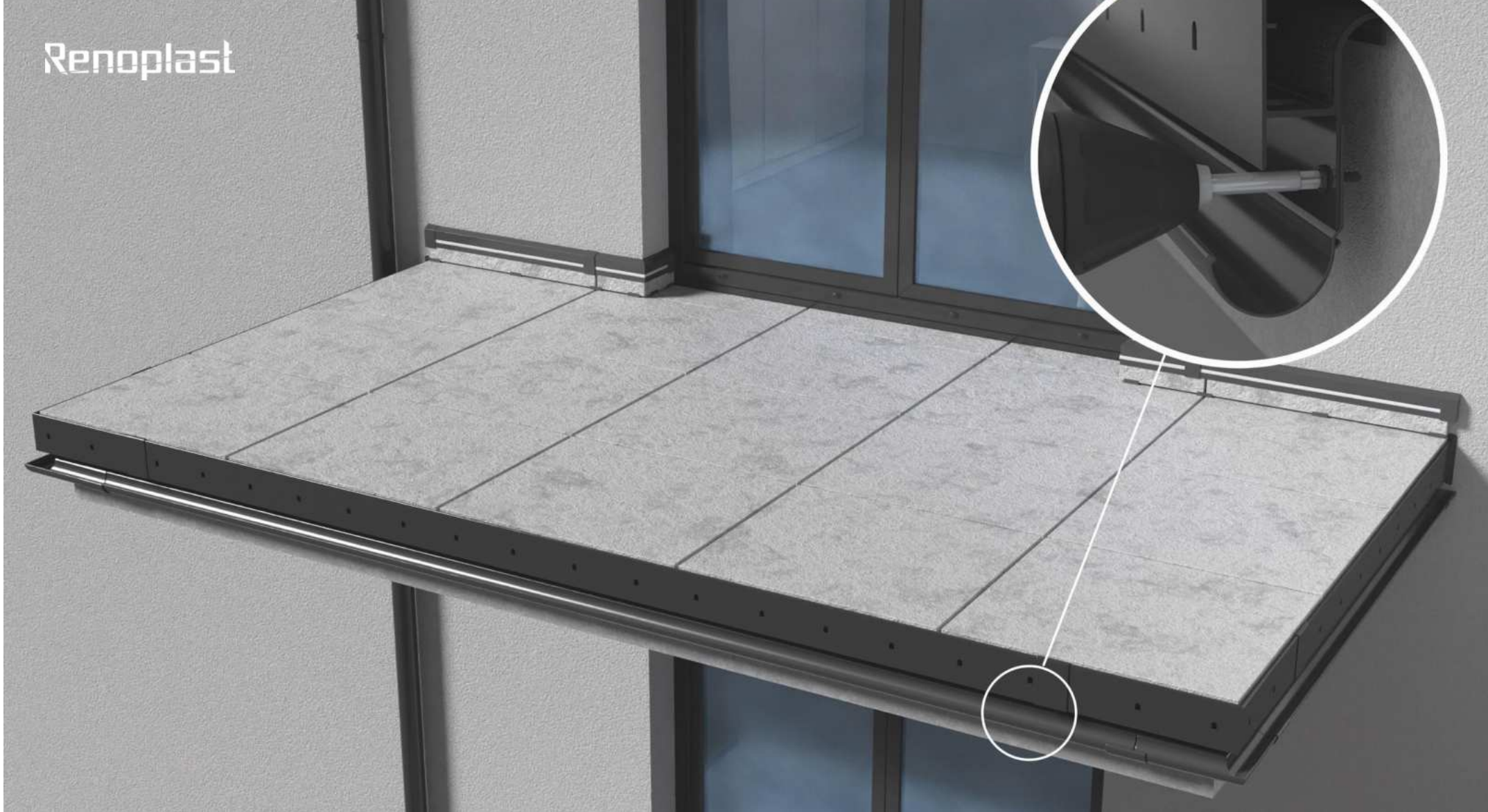
Laying paving slabs on SMART support pads

Lay pavers/tiles on the **SMART** support pads. Layout of support pads varies with the tile/paver size. The proposed layout for 60 x60 cm slabs is presented above. Use adjustment shims of thickness **0.5**; **1**; **2** and **3** mm to adjust and compensate for substrate unevenness and irregularity.



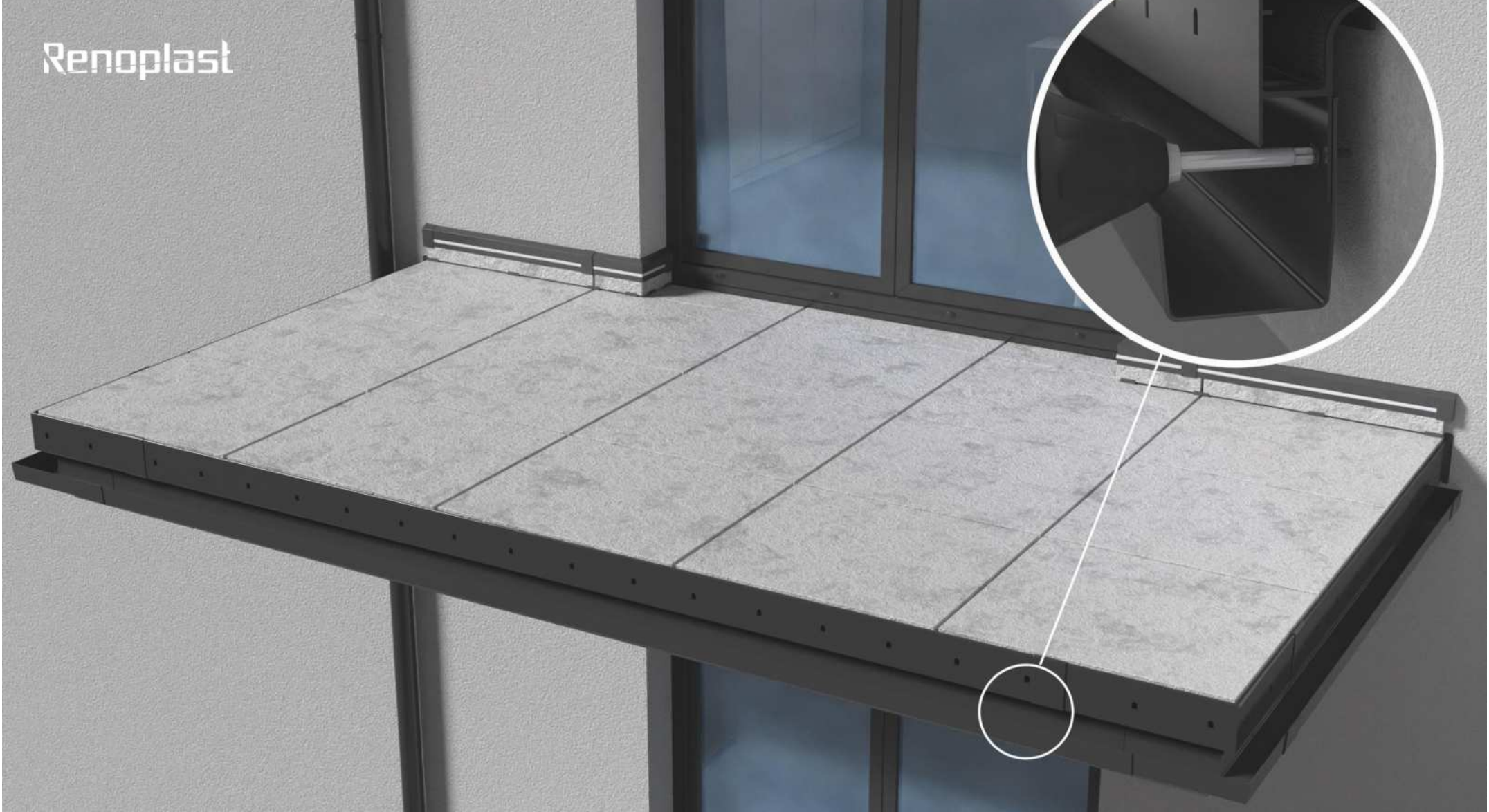
Installation of C1 and C2 skirting profile

To provide a secure connection for the **EPDM membrane** turned up the wall, install the skirting. First, screw the **C1** support profile or base profile onto the wall. Use a PU sealant to seal the gap running along the top edge of the **C1** profile and install the skirting tiles. Then screw in the **C2** top profile, mount corners and connectors. Finish with fitting in the plastic strip to cover the mounting channel of the **C2** profile. The **C2** profile features a slot to accommodate the LED strip light that may illuminate the balcony/terrace floor.



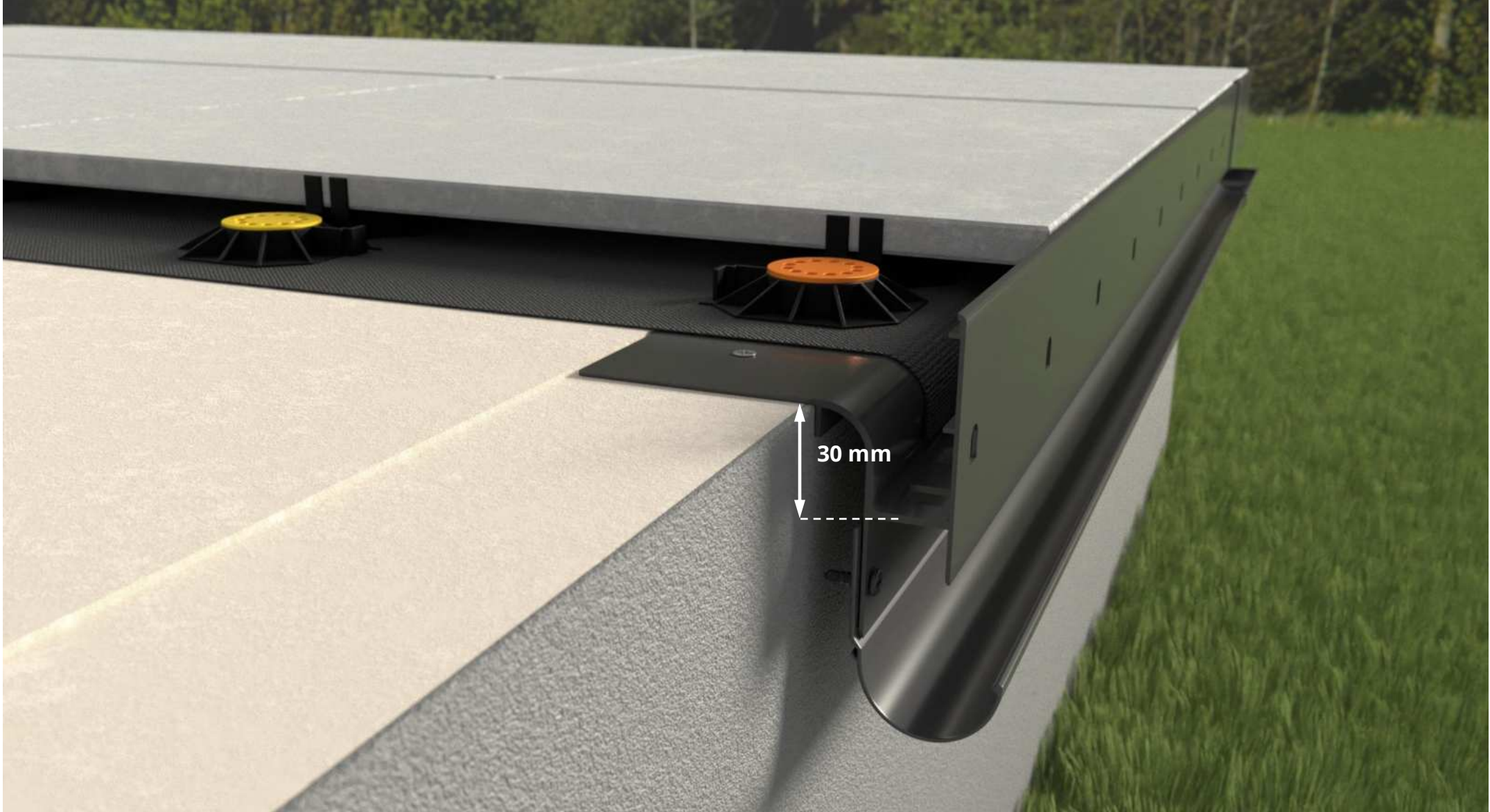
Assembly of integrated aluminium R50 gutters

Screw in the **R50** gutter to fascia that is integrated with the underside section of the **W30R+** profile. Fix both the gutter and the corners with self-drilling screws (included in the set with gutters). Snap the **LR50** clip-on connector on joints.



Assembly of integrated aluminium RK65 gutters

Screw in the **RK65** gutter to fascia that is integrated with the underside section of the **W30R+** profile. Fix both the gutter and the corners with self-drilling screws (included in the set with gutters). Snap the **LK65** clip-on connector on joints.



COMMENTS:

The **W30R+** profile front edge is 30 mm high and matches with the height of the balcony/terrace floor with thick paving tiles laid on the **SMART** support pads. When the profiles are installed, drainage holes are positioned beneath the waterproofing to efficiently divert water away from balcony/terrace. The profile front edge also features weep holes that, when the main drainage holes are clogged, signal the user that the main drainage holes must be inspected. The front edge of the **W30R+** profile provides a support for pavers/tiles.